



CLASSIC MOTOR RACING CLUB INC.

*The Southern Classic Regularity Trial*

**13th – 15th February 2026**

Levels Raceway, 418 Falvey Road, Timaru, New Zealand



## INTRODUCTION

The purpose of a Regularity Trial is to set consistent lap times at less than the full potential of the Driver and Vehicle. **It is not a race.** A Regularity Trial provides an opportunity for a Driver to compete in a different type of Competition with less vigour than racing. For an Historic event, the showcasing of a vehicle in this form of Competition is an important aspect of maintaining and demonstrating motorsport history.

## STANDARD SUPPLEMENTARY REGULATIONS REGULARITY TRIAL PART 1

### 1. JURISDICTION

The event is a ClubSport Basic event promoted by the Classic Motor Racing Club of NZ Inc. at Levels Raceway, Timaru on 13th – 15th February 2026. The event is a Regularity Trial Event being held as part of the SOUTHERN CLASSIC 2026. The Meeting will be held under these Supplementary Regulations, the MotorSport NZ National Sporting Code and its Appendices and Schedules, particularly Appendix Five, Schedule C, Part Three — Standing Regulations for the Conduct of Sporting Trials, Car Trials, Appendix Five, Schedule RT — Regularity Trials and Appendix Two, Schedule A and AA— Driver and Vehicle Safety, and Appendix Four Schedule Z - Race.

The MotorSport New Zealand permit number is:

### 2. MAJOR OFFICIALS:      Steward: TBA    Clerk of the Course: TBA

- 2.1.    Organising Committee: Paul Coghill, Zara Coghill, Steve Keene, Nick Simpson, Karen Clearwater, Rod McKenzie, Laura Arras & Sacha Lobb
- 2.2.    Secretary of the meeting:      Zara Coghill
- 2.3.    Officials of the Meeting
- 2.4.    A full list of the officials of the meeting will be posted on the event noticeboard

### 3. ELIGIBLE VEHICLES

All cars entering the Regularity Trial will be combined into one group.

As this is a Clubsport Basic event cars with a current WOF and Registration may be entered but must be a minimum of 30 years or older.

Open Top Vehicles

- It is not mandatory, but is recommended that open top vehicles be fitted with a safety roll bar
- A non – homologation roll bar is allowed if the vehicle has a current WOF and Registration
- If the vehicle is not road registered then the roll bar must be homologated by MSNZ.

All race vehicles shall comply with Appendix Five Schedule C, Appendix 6 Schedules K, T and C and CR and Appendix Two Schedule A/AA of the current MotorSport New Zealand manual unless stated otherwise in these supplementary regulations.

#### 4. ENTRY OPENING AND CLOSING DATES, ENTRY FEE & ACCEPTANCE OF ENTRY

- 4.1. **Entries open** with the publication of these regulations. Normal Entries for this meeting close at 6.00pm, Sunday 25th January 2026.

Entries must be completed on the manual entry form or through MotorSport On Line (MSOL-SPORTY)

A link to do this is available on our website: <https://classicmotorracingclub.nz/regularity-trial/>

The organiser reserves the right to refuse any entry in accordance with the prescribed provisions of the National Sporting Code.

#### 4.2. Entry Fee

Entry Fee (Includes GST GST No. 092-326-144)	Normal Entry Fee	Late Entry Fee
Regularity Trial Entry Fee	\$395.00	\$100.00
Classic Motor Racing Club Membership \$50.00 See 5.1		
Transponder Hire \$30.00 See 10.1		
Extra crew Passes (note: Drivers pass and 3 crew free) \$20		
Total Fee		

The entry fee with any extras is payable to the Classic Motor Racing Club Inc. by direct credit to the Club's bank account **Classic Motor Racing Club of NZ Inc. 01-0877-0093784-00** or if you are using the MotorSport On Line (MSOL-SPORTY) entry form you must complete the payment section for your entry to be received.

#### 4.3. Acceptance of Entry.

Acceptance of entry will be emailed along with the Supplementary Regulations Part 2

Refunds will only be made in full to competitors whose entry has not been accepted, or if the meeting does not take place, or to those whose withdrawals have been received up to close of normal entries. Withdrawals received before closing date 100%.

Refunds after the closing date but before documentation will be 75% of entry costs due to costs incurred. No refunds after documentation will be given.

#### 5. COMPETITOR REQUIREMENTS AND UNDERSTANDING

##### 5.1. Licence Requirements:

All drivers must be a financial member of The Classic Motor Racing Club of NZ Inc. and hold as a minimum a MotorSport NZ M Grade Licence or Vintage Car Club Race Licence which must be obtained before the meeting.

5.2. **Competitors Briefing:**

A written drivers briefing will be distributed by email. A welcome will be held at the assembly of drivers at 11:45 Friday 13th February 2026, in front of the Technical Centre. **A special briefing for Regularity Trial competitors will be held on Friday morning before the first Regularity Trial practise session. Time and Location for this will be advised on acceptance of entry.**

5.3. **New Competitor:**

Any driver who has not previously competed at the circuit must indicate that on the entry form and attend the New Competitors briefing which will be held immediately after the welcome. New competitors will be required to display three diagonal stripes on the rear of the vehicle.

5.4. **Competitor Understanding:**

In submitting the entry competitors are deemed to fully understand the MotorSport New Zealand National Sporting Code and its relevant Appendices and Schedules. In particular:

- Appendix Five, Schedule C and Schedule RT.
- Schedule Z Articles detailing Flag signals and Code of Conduct.
- The National Sporting Code articles pertaining to protests and competitors' obligations;

5.5. **Safety Equipment:**

Drivers competing in race cars with a logbook must wear safety apparel that as a minimum meets the requirements of Appendix Two Schedule A or Appendix Six Schedule AA for National Race events.

Drivers competing in WOF cars without a logbook must wear safety apparel that as a minimum meets Appendix Two Schedule A or Appendix Six Schedule AA for Clubsport Basic Events. In addition to fire-retardant one-piece overalls, gloves, and closed shoes and an approved helmet with a minimum of a donut neck protector must be worn.

5.6. **Drivers Competing in Other Classes**

Drivers who have competed in the meeting in another class may not use the same vehicle in this class.

5.7. **Competition Numbers:**

Please include your preferred competition number on the entry form which we shall endeavour to allocate to you. If you do not have a race number you will be advised of your allocated number on acceptance of entry. All competition numbers on competing vehicles must be of the minimum dimensions set out in the current MotorSport Manual Appendix 2 Schedule A. Drivers are to supply their own numbers. No times will be recorded for vehicles with non-compliant numbers, nor will they feature in results.

5.8. **Passengers:**

Passengers are not permitted in any vehicle at any time.

## 6. **DOCUMENTATION AND SCRUTINEERING AUDIT INSPECTION**

6.1. **Documentation:**

Documentation will be available in the South Canterbury Car Club Clubrooms at the following times: FRIDAY 13th FEBRUARY 9am UNTIL 5pm. Entrants arriving after stated times may be accepted for documentation and auditing at the discretion of the organisers or race secretary. Documentation is compulsory for all competitors.

6.2. **List of Documents to be produced:**

Current MotorSport NZ/ Vintage Car Club Competition Licence (Physical or Electronic)  
Current CMRC Club Membership Card  
Log Book (Physical or Electronic) or evidence of current WOF/REGO  
Vehicle Identification documents (MSNZ COD, FIA HTP, HC and/or VIC)  
Roll Protection Identification  
Any applicable supporting overseas documentation.

6.3. **Scrutineering Audit Inspection:**

These inspections will occur concurrently with documentation. During the documentation process you will be advised if your vehicle is subject to audit. You should assume that your vehicle is going to be subjected to audit and as a consequence is in readiness to be taken to the audit venue immediately after you have concluded documentation. **NOTE: all vehicles without a logbook will be subject to audit. See attached Checklist**

6.4. **Pre Event Scrutineering Audit Inspection**

We have also arranged audits to be carried out in Christchurch, Timaru and Dunedin prior to the event and the contacts are. The audit must be done within 14 days of the running of the event. If you want to have your car audited prior to the event please indicate this on the entry form. You will then be advised when this is to take place

## 7. **POSTPONEMENT CANCELLATION ABANDONMENT AND ORGANISERS' RIGHTS**

- 7.1. The organiser advises that if less than **12** entries are received by the close of entries at midnight on 6.00pm, Sunday 25th January 2026 the Regularity Trial may be postponed or cancelled.

## 8. **OFFICIAL BULLETINS**

Official Bulletins may be issued in accordance with the provisions of the National Sporting Code and will be displayed in the secretarial office.

## 9. **ALCOHOL**

9.1. **Alcohol:**

Alcohol is not permitted to be consumed by any competitor or their crew at the event before or during the day's competition. Refer MotorSport NZ National Sporting Code Art 38.

## 10. **REGULARITY TRIAL**

10.1. **Official Timing**

The Regularity Trial will be electronically timed at this meeting, using the South Canterbury Car Club's AMB-it Timing System. All vehicles must be fitted with an operational Tx260 transponder or like which is fully compatible with this timing system. For those who haven't purchased as yet their own transponder a limited number of transponders may be hired from the Race Committee at the meeting. Those cars not carrying this equipment will not receive lap times. See entry form for hire details.

10.2. **Practice and Nominated Times:**

Regularity Trial drivers must participate in the practice sessions.

After the second practice each driver shall nominate a lap time for the event. The first timed lap will be from the time the vehicle passes the start/finish line after the safety car releases the field to commence racing.

Nominated lap times shall not be less than the speed bar designated for the circuit.

The Levels Circuit speed bar will be 1 minute 20 seconds.

10.3. **Grid Formation:**

The Regularity Trial grid will be assembled in the pit assembly area using the drivers nominated times with the fastest on grid position one and the slowest on the last grid position. The aim of this grid positioning and the starting procedure is to minimise safety issues.

10.4. **Starting Procedure**

Vehicles will be released via pit lane exit onto the circuit in single file following the safety car for a warm-up lap. During the warm-up lap each Vehicle must remain in single file. Drivers must maintain the speed set by safety car with no overlapping or fanning out, i.e. single file, maintaining a gap of no more than three (3) vehicle lengths to the vehicle in front. On approach to the start line, the Safety Car will turn off its flashing lights and enter Pit Lane. Once the vehicle crosses the safety car control line, Drivers can then accelerate away to cross the start/finish line and start their first timed lap.

10.5. **Overtaking**

Requirements of Schedule Z Code of Driving Conduct will apply. However, there may be a large variation in vehicle speeds. Drivers of faster vehicles, encountering slower vehicles, need to ensure that any overtaking manoeuvre can be carried out safely in its entirety allowing the overtaken car to continue on its own line.

10.6. **Other Timing Devices or Aids:**

Timing devices or aids of any type that may assist a driver in meeting their nominated lap or target time are not permitted.

Smart phones shall not to be carried or placed in any car.

10.7. **Examples of "over driving"** reported to the Clerk of the Course by track officials may render the driver liable to a penalty as per Schedule P 4Z.5, 4Z.6 to 4Z.7 in the current Motorsport New Zealand Manual.

## 11. RESULTS

11.1. The variance in seconds between the nominated lap time and the actual lap time will be recorded over each completed lap (excluding the first lap).

11.2. The winner of each round will be the driver with the smallest average variance.

11.3. The failure by a driver to complete the Regularity Trial to the chequered flag due to a breakdown, mechanical failure or leaving the circuit and unable to return unaided will mean a result from that round will not be recorded.

11.4. Should the Regularity Trial be Red Flagged and unable to be re-started then that Trial will not count for Round points.

- 11.5. The overall winner for the Regularity Trial event will be the driver with the smallest average variance over the whole meeting.

## **12. OFFICIAL RACE SIGNALS**

- 12.1. As per Appendix Four Schedule Z Art 14 of the current Motorsport Manual, Drivers will be signalled by a Motorsport NZ approved signal light system instead of flag's, at the Circuit's seven marshal points.
- 12.2. The lights will have the meanings as indicated in the text of Art 14 and its addenda.
- 12.3. Start Lights, Flags and Signal Boards will continue to be used at the Start/Finish line.
- 12.4. Should an issue or fault with the signal light system develop, signalling to Drivers will revert to flags.
- 12.5. Levels Raceway is also equipped with an Alitrax Circuit Control MegaViz Screen. This will be used at the Start/Finish Line along with flag signals and boards to communicate supplementary messages, penalties and warnings to Drivers.

## **13. MAXIMUM PERMITTED NOISE LEVEL**

- 13.1. The maximum permitted noise level is 95db(A). Appendix 2 Schedule A, 3.8 Noise levels, NZ MotorSport Manual. It is the policy of the South Canterbury Car Club Inc. to Black Flag off the circuit any competition vehicle exceeding this level. These vehicles may not resume competition until such time as repairs are carried out to the satisfaction of the appropriate official. Any further breach of the noise level will result in the competition vehicle being penalised further and excluded from the Meeting. The Clerk of the Course will be Judge of Fact in these matters. The running of competition engines is PROHIBITED outside the hours of before 8:00a.m. and after 6:00p.m.  
The South Canterbury Car Club Inc. stipulates that competitors are not to drive competition vehicles outside the pit proper or race circuit proper for any form of testing activity once the meeting has commenced. Competitors and or their teams found to be doing so will be penalised.

## **14. FUEL HANDLING AND FIRE SAFETY REQUIREMENT**

- 14.1. Not more than 40 litres per car may be stored in the pit garage (keep fuel in separate locations if more than one car is in the garage). A minimum 4.5kg dry powder fire extinguisher must be available for each car in the pit garage. Fire resistant protective overalls, balaclava, gloves etc. are recommended for competitor team members refuelling the car and performing the role of the fire marshal with the fire extinguisher at the ready. Any clothing or shoes used for refuelling should be separate from any clothing or shoes worn while competing in a race vehicle.

Note: Competitors should be familiar with and adhere to the following documents:

WorkSafe Quick Guide "Storing and handling fuel at motorsport events" dated August 2019:

[https://www.worksafe.govt.nz/dmsdocument/5567-storing-and-handling-fuel-at-motorsport-events;](https://www.worksafe.govt.nz/dmsdocument/5567-storing-and-handling-fuel-at-motorsport-events)

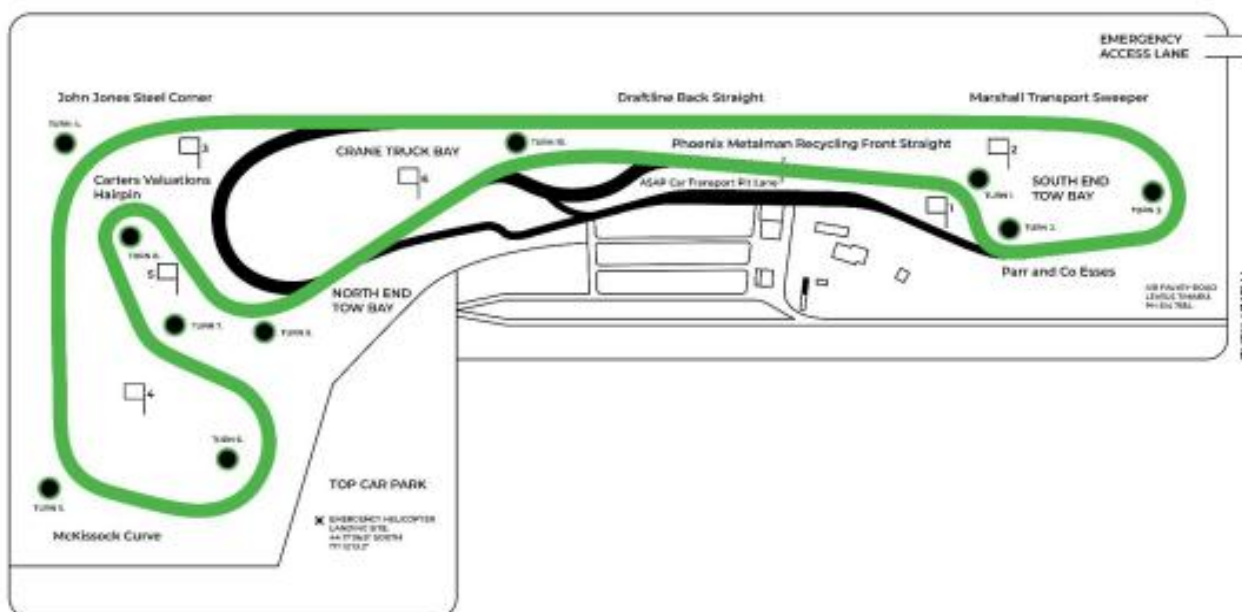
## 15. ADVERTISING ON RACE CARS:

In the spirit of Historic and Classic racing and in line with overseas standards the organisers will once again impose the following regulation with regard to advertising on race cars.

- 15.1. Advertising will be limited to a total area of 0.12 sq. m (2 X 600mm X 100mm) of the surface area of the car (including windows). This will include all sponsors of previous events but not the advertising required to be displayed by the sponsor of this meeting.
- 15.2. Exceptions - the only exceptions to this will be any genuine factory cars or very accurate replicas which are competing in the original factory livery. No advertising banners, sales outlets or promotional displays are allowed without the prior approval of the meeting organisers.
- 15.3. Display Requirements - the Organisers will advise the Sponsor display requirements at documentation. Failure to carry the Sponsors logo may result in penalty.

## 16. CIRCUIT

The circuit to be used will be Circuit One (as depicted on schedule one of the Motorsport New Zealand Inc. Circuit licence.)



## GENERAL INFORMATION

### 1. VEHICLE TOWING

Meeting organisers and tow truck operators will not accept responsibility for any damage caused to any race car during any recovery or relocation operation at the meeting. It is the race car owner's responsibility to provide a means of towing or lifting at both the front and rear of the car. Please ensure towing eyes are clearly marked.

### 2. LUNCHTIME ENTERTAINMENT.

There will be on-track displays of Lotus & other vehicles. They will line up for a photo and may do 3 or 4 laps on the track behind the Safety vehicle.

**3. ANIMALS**

**NO Animals of any kind are permitted within the confines of the Pit and Paddock areas.**

**4. COMPETITOR PASSES**

It is a condition of entry that competitors and their crews must wear/show their passes at all times. The organisers reserve the right to check tickets at random. Offenders will be removed from the grounds.

**5. ENTRY PASSES**

Four passes will be issued with each entry. Additional passes will be available from the Race Secretary, or you may indicate your requirements on the entry form

**6. MOTORSPORT NEW ZEALAND MANUAL**

The current version on the manual can be obtained online. <https://manual.motorsport.org.nz/>  
It is highly recommended that overseas drivers view and familiarize themselves with this document.

**7. WHAT DO YOU GET FOR YOUR ENTRY FEE?**

Four event entry tickets (Driver and three pit/support crew)  
Two practice sessions Friday 13th February 2026  
Four 15 min time certain races – weather and time dependent  
Nibbles for after race get together Friday Night --- (purchase own drink)  
Prize Giving including light food from 5pm – 7pm Saturday Night --- (purchase own drink)

**8. TRAILERS**

All trailers must be parked in the designated area outside the pits. In recent years the pits have become congested. Please show courtesy to your fellow competitors by setting up in the area designated for your class AND ensuring non-essential vehicles/trailers are parked in the top paddock

**9. FUEL**

Purchase: The Organisers have arranged for 100 Octane Race Fuel to be available at a company at the nearby Timaru Airport. Pumping Times will be displayed at the Race Secretary's Office.

**10. CHILDREN**

Children in the Pits Paddock areas must be under parental supervision. Children are not permitted in the pit lane. Children are prohibited from riding bicycles or scooters in these areas.

**11. CAMPING**

Competitors will be allowed to camp in the grounds on Thursday 12th February 2026 but must not appear at the venue or in the pit area to set up before 4.30 pm. It is expected all campers and vehicles vacate the site no later than 10am Monday 16th February 2026.

**12. IF YOU HAVE A QUESTION...**

The Race Committee asks that competitors and crew do not bother the South Canterbury Car Club staff and direct all questions to the Race Committee or Secretary of the meeting.

**PHILOSOPHY**

Historic and Classic Motor Sport is that branch of the sport where vehicles from a past era are used in friendly rivalry to allow them to be exercised in a manner that the manufacturers intended. It is not a branch of the sport where series and trophies for winning races or championships are held in higher regard than the sheer enjoyment of being involved.